

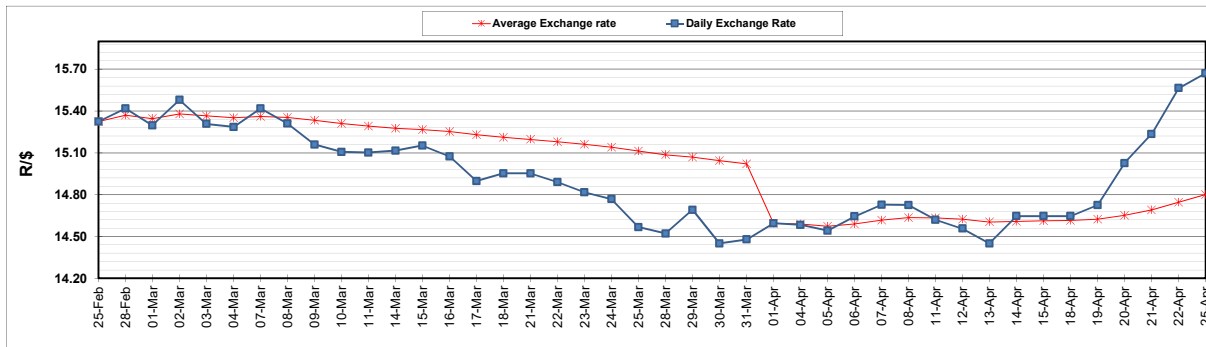
	PETROL 95 ULP	PETROL 93 ULP & LRP	DIESEL 0.05%	DIESEL 0.005%	ILL. PAR.
GAUTENG PUMP PRICE (SA c/l) AS FROM 06/04/2022	2,196.000	2,163.000	-	-	-
WHOLESALE PRICE (SA c/l) AS FROM 06/04/2022	-	-	2,101.440	2,123.840	1,584.688
SINGLE NATIONAL MAXIMUM RETAIL PRICE	-	-	-	-	2,045.000
BASIC FUEL PRICE - 25/04/2022 (SA c/l)	1,267.676	1,248.964	1,482.828	1,501.538	1,434.155
PRESS RELEASE CONTRIBUTION TO BFP 06/04/2022 - 25/04/2022 (SA c/l)	1,278.710	1,255.710	1,402.630	1,425.030	1,363.128
UNIT OVER/(UNDER) RECOVERY - 25/04/2022 (SA c/l)	11.034	6.746	(80.198)	(76.508)	(71.027)
AVERAGE BASIC FUEL PRICE 01/04/2022 - 25/04/2022	1,223.642	1,203.514	1,437.166	1,451.125	1,389.223
AVERAGE UNIT OVER/(UNDER) RECOVERY 01/04/2022 - 25/04/2022	23.578	22.118	(86.595)	(80.977)	(73.036)

### ANALYSIS MOVEMENT OF AVERAGE OVER/(UNDER) RECOVERY

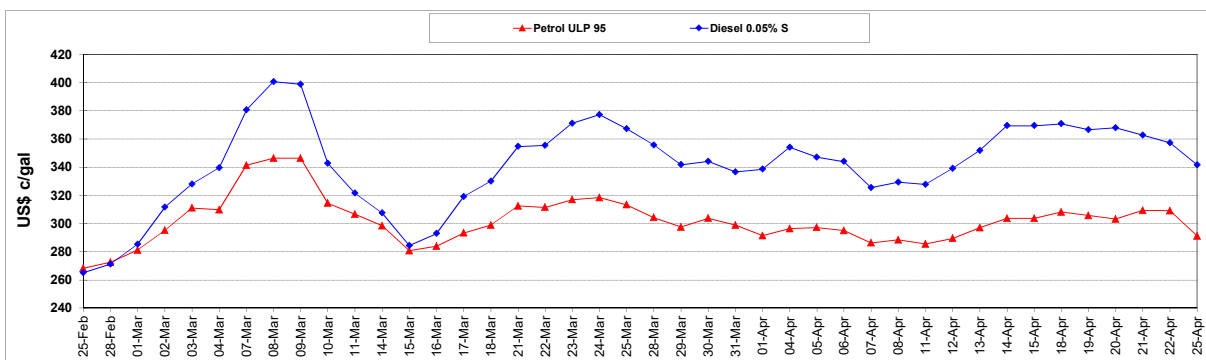
	PETROL 95	PETROL 93	DIESEL 0.05%	DIESEL 0.005%	ILL. PAR.
- MOVEMENT IN INTERNATIONAL PRODUCT PRICES	5.282	4.122	(108.085)	(102.676)	(93.809)
- MOVEMENT IN EXCHANGE RATE	18.297	17.996	21.490	21.699	20.773
AVERAGE UNIT OVER/(UNDER) RECOVERY 01/04/2022 - 25/04/2022	23.578	22.118	(86.595)	(80.977)	(73.036)

### R/\$ EXCHANGE RATE - (R/\$15.6708 - 25/04/2022)

#### EXCHANGE RATE USED IN BASIC FUEL PRICE



#### INTERNATIONAL PRODUCT PRICES OF BASKET USED IN BASIC FUEL PRICE



#### BASIC FUEL PRICE IN SA CENTS PER LITRE

